

# City of Atlanta Updated 2015 Disparity Study Results



David Keen, Principal  
Keen Independent Research LLC  
100 Fillmore St., 5<sup>th</sup> Floor  
Denver CO 80206  
303-385-8515  
928-684-3021 (fax)  
[dkeen@keenindependent.com](mailto:dkeen@keenindependent.com)  
[www.keenindependent.com](http://www.keenindependent.com)

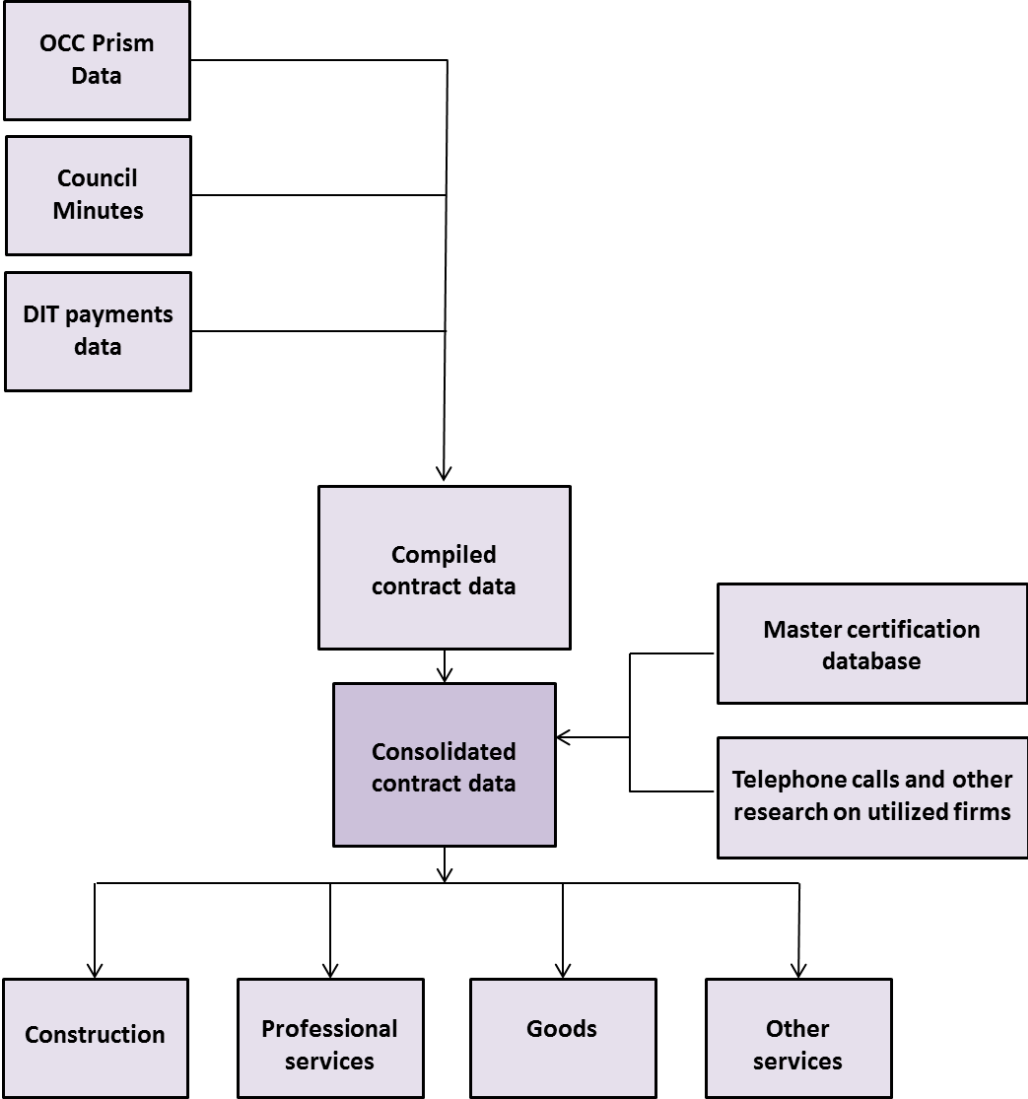
City of Atlanta 2015 Disparity Study Briefing  
December 2015



## Overview of analyses conducted

- Examined utilization of minority- and women-owned firms (MBE/WBEs) by group for City-funded contracts and subcontracts:
  - Construction
  - Professional services
  - Goods (EBO Ordinance does not apply)
  - Other services
  
- Collected data on the availability of Atlanta area firms for City work
  
- Performed disparity analysis for City-funded contracts with and without contract goals
  
- Examined City-funded SBE goals contracts
  
- Analyzed outcomes for minority- and women-owned firms in the Atlanta marketplace

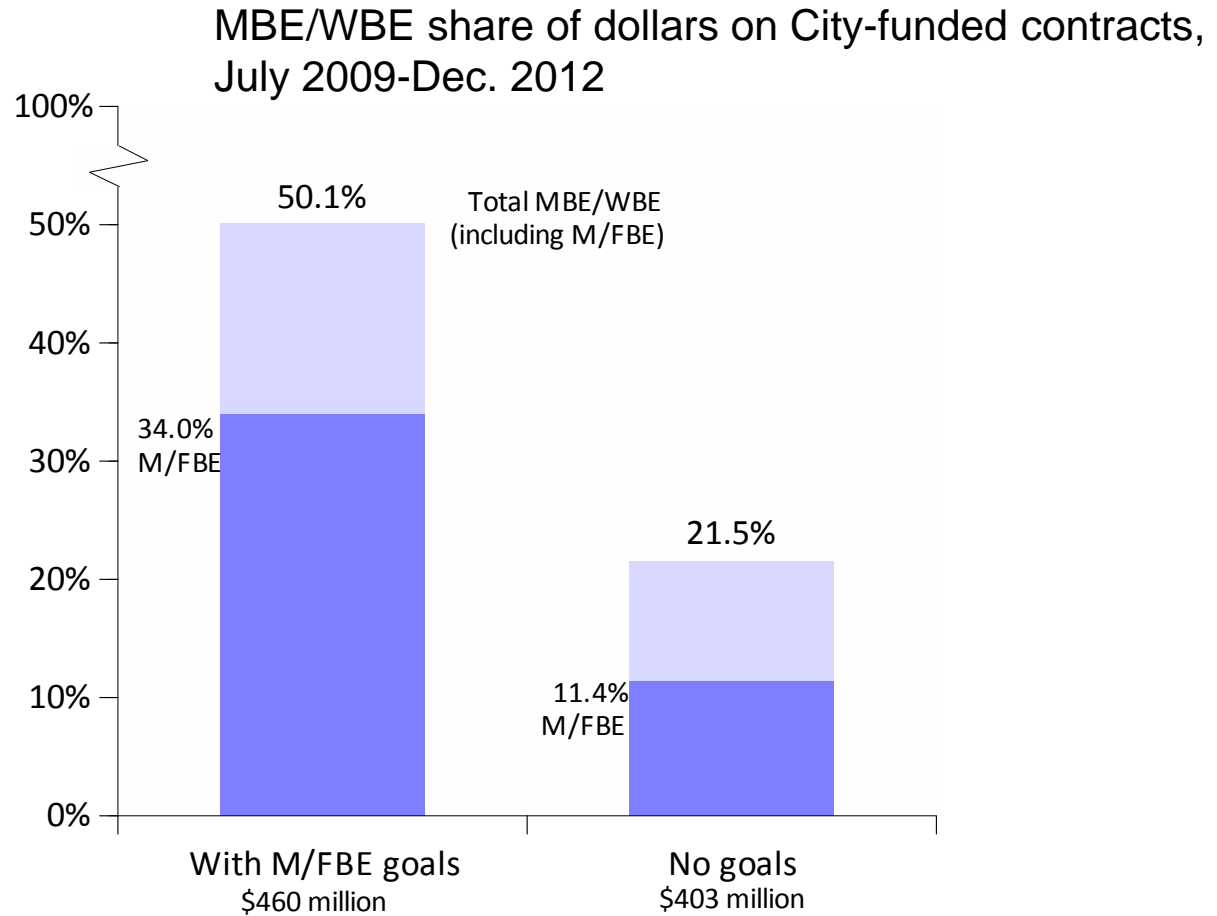
# Utilization analysis went beyond City OCC data



## Not a level playing field for minority- and women-owned firms in the Atlanta Metro Area marketplace

- Barriers to employment and advancement within key local industries
- Fewer minorities and women starting and owning businesses
- Barriers regarding access to capital
- Higher rates of business closures
- Disparities in business revenue
- Disproportionately small (96%+ of MBE/WBEs based on SBA)
- Do not have the same “bid capacity” as majority-owned firms
- Disparities in participation in non-City construction contracts within city limits
- Underutilized by Clayton County and GDOT in certain types of contracts
- More likely to experience difficulties learning about bid opportunities, obtaining lines of credit or loans, obtaining bonds, meeting insurance requirements, bidding on large projects and other aspects of doing business

# Much higher participation of MBE/WBEs in City contracts when EBO Program applies



# MBE/WBEs expected to receive 27% to 39% of City-funded contract dollars given availability to perform that work

## Dollar-weighted MBE/WBE availability

Race/ethnicity and gender	Construction	Professional services	Goods	Other services
African American-owned	17.0 %	15.2 %	8.0 %	18.1 %
Asian American-owned	3.7	8.4	2.7	2.9
Hispanic American-owned	6.0	2.9	2.7	0.6
Native American-owned	0.9	0.9	0.7	0.2
WBE (white women-owned)	<u>11.1</u>	<u>8.2</u>	<u>13.3</u>	<u>7.4</u>
<b>Total MBE/WBE</b>	<b>38.7 %</b>	<b>35.7 %</b>	<b>27.5 %</b>	<b>29.2 %</b>

## Because of EBO Program, no overall disparity for MBE/WBEs in City-funded contracts, but disparities when not applied

- Total MBE/WBE utilization higher than availability for City-funded contracts overall
- However, MBE/WBE utilization substantially below availability when EBO Program did not apply
- Pattern of substantial disparities for MBE groups and for WBEs across construction, professional services and other services when EBO Program did not apply
- These disparities include Asian American- and Hispanic American-owned firms in construction
- Along with EBO Program, City's SBE Program appears to be effective as a complementary tool